



BINNAWAY SHOW

1929



2024

SATURDAY 24 February 2024

President:	Harry Powell	(02) 6844 6244
Secretary:	Pam Southwell	0429 441 792
Horse Secretary:	Emma Staples	0448 032 087

E binnaway.show@gmail.com F @binnaway show
W www.binnawayshowground.com.au

THANK YOU TO OUR PLATINUM SPONSOR



Newton's **Mechanical** **Repairs**

For all your mechanical needs
Truck or Tractor Repairs
On-Farm Service or Workshop

6842 1167

Crane St, Coonabarabran

0428421167



John Berends Implements



Slashers | Finishing Mowers | Landscape Equipment



TABLE OF CONTENTS

Program of events	3
COVID information	5
Showground Map	6
Presidents Report	7
Admission charges	8
Thank you to sponsors	9
Young Judges Day	12
Show and Shine	16
General conditions	17
Section A Horses	18
Section B Beef Cattle	27
Section C Sheep	29
Aspiring Auctioneers	32
Entry forms	42
Yard Dog Trials	44
Section E Farm Produce	46
Section F Horticulture	47
Section G Jams & Sauces	49
Section H Cooking	49
Section I & J Needlework & Craft	51
Section K Arts and Craft	52
Section L Photography	55
Section M Poultry	56
Art in the Pavilion	72

2024 Show Highlights

- Coona Car Club Show & Shine
- Yard dog trials
- Evening entertainment
- Artworks and art auction
- Cow Horse competition
- Pavilion exhibits
- Horse events
- Cattle exhibits
- Live music
- Family fun all day

PROGRAM OF EVENTS FOR THE WEEK

Tuesday, 20 February

YOUNG JUDGES DAY

- 8:30am-3:30pm
- School students from across the Warrumbungle region will converge on the Binnaway Showground for a hands-on day assessing livestock and produce and learning about careers in agriculture.

Friday, 23 February

ART PREVIEW EVENING AND ART AUCTION

- 7:00pm
- Come and enjoy a preview of the art and photographic exhibits in the main pavilion. Paintings will be available for purchase on the night and items up for live auction. Enjoy drinks and savories. \$10 entry, all welcome.

Friday, Saturday, Sunday 23-25 February

REINED COW HORSE COMPETITION

- All day
- Watch the best in the business saddle up and showcase their skills cutting and reining cattle on horseback. Competition extends throughout the weekend. Spectators welcome.

Saturday, 24 February

BINNAWAY SHOW

- All day - 2024 Binnaway Show
- Bring the family for a great day out with action all day including cattle, sheep, goats, horses, Coona Car Club, pavilion exhibits and horses with horse sports into the evening. Plenty of food, your traditional show favorites as well as BBQ run by the Binnaway Lions Club and a bar run by the Binnaway Bombshells football club and musical entertainment into the night.
- Tickets 123Tix – Follow us on Facebook @binnawayshow for updates and details.



Plumber | Gas Fitter | Drainer | Metal Roofer

LIC 308154C

ABN 969 364 885 17

SERVICES INCLUDE:

- Hot water systems • Electric Gas and Solar
- Burst/Leaking pipes • Leaking toilets and taps
- Rainwater system installs inc. tanks and downpipes
- Metal Roof repairs and guttering • LPG and Natural Gas systems
- Septic/Sewerage drainage installs and repairs
- Sewer/Stormwater Blockages using High Pressure Water Jetter
- CCTV Drain Inspections • 2.6t Excavator available

**SERVICING THE WARRUMBUNGLA SHIRE
WILLING TO TRAVEL**

Ph James 0409 754 715

WE ARE A COVID SAFE EVENT

In the interest of public safety we ask you to please:

- Sign in by having your electronic ticket (purchased through 123Tix) scanned at the gate
- Not attend our events if you have any COVID symptoms or feel unwell
- Use hand sanitizer provided at stations
- Physically distance from other patrons where possible
- Follow all directions, guides and instructions provided throughout the week's events.
- Please be patient and remember we are volunteers doing our best to run a safe and enjoyable event for the community.

Thank you for your cooperation. We hope you have a wonderful time at our showground!



Binnaway Showground

CYPRESS STREET

PARK STREET

Wheelchair accessible parking

Entry gate

Yard dog trials

Toilets

Poultry

BBQ

Main Pavilion

Secretary's office

Show and Shine

Horse secretary

Sheep Pavilion

Announcer's box

Shearing stand

Stables

First Aid

Cattle yards

Binnaway Multipurpose Arena

Entry gate

Showers & toilets

Presidents Report – by Harry Powell

On behalf of the members of the Binnaway Show Society I thank you for supporting Binnaway Show. Our Show Society would not be able to run without the great support of members and the local organisations who assist us in so many ways. We are so very grateful to them all.

I want to say how very proud we are of all the great results we have had this year and the years before which is all due the wonderful support that this community gives to the society. Thankyou

The year started off with the great attendance of the Cow Horse Championships organized by Michael Rapley and his fantastic support team.

Then followed the Young Judges Day organised by Simone and James and their great team of helpers and sponsors. It was very rewarding when two mothers came to me and said how much their children had enjoyed the day and how much they had learnt. We have to say thank you to the ones who have supplied their time, knowledge and stock for the day and thank you to the students and teachers who attended.

Our Show began with the Art Show on Friday night, so wonderfully organised by Michelle Rapley, with over 100 art enthusiasts viewing the great entries and participating in the very successful auction. Thank you for the great food goes to Margie Scifleet and her team of school kids who all looked the part in their uniforms.

Show Day was on Saturday with all sections well supported.

We are very grateful to the Mackay family for supplying the sheep for the Dog Trials each year but due to unforeseen circumstances this year they had to pull out at the last minute and were very grateful to the team from Derrawee for supplying the sheep at short notice and for their assistance on the day. We would like to thank Jeanette Fenwick for supplying us with the portable sheep yards for the day ... this is a gesture started by her late husband, Bob, and is greatly appreciated.

The Show and Shine sections continue to grow and always create a lot of interest. We thank them for their continued support.

Michael Rapley's Cow Horse Events have been outstanding with four separate weekends over the past 12 months. It has been so rewarding to see the results of Michael and James hard work and they have created a wonderful asset for Binnaway with then new yard complex, new water system, power upgrade and lighting and all the other improvements done at the Showground. It has certainly put Binnaway on the map. We are very fortunate to have the Exchange Hotel and the Bowling Club and the many other helpers who provide the meals and refreshments on these days.

On Saturday night 13th May we staged a fantastically successful fundraising night for Michael to assist with his treatment. This night was so wonderfully embraced and supported by all who donated goods and bid at the auction. Thankyou to Wilber and Caz for all their organization for this event and we wish Michael and his Family all the very best and hope the funds raised will assist in some small way.

I would like to say that the Show Society is totally indebted to Pam Southwell and James Larkin for the countless hours they so generously dedicate to the Society, and I thank them wholeheartedly along with the many other wonderful helpers who give so generously of their time to the Show Society

Thank you to Gemma Mitchell for stepping up and entering the Show Society's Young Woman Competition for the 2nd time. We hope Gemma found her experience worthwhile.

As Jilly is finding it very hard to decipher my handwriting to produce this report, I feel it is time someone else had the privilege to write the President's Report

ADMISSION, MEMBERSHIP AND CHARGES

ANNUAL MEMBERSHIP

Applications for new membership and renewal of existing membership close 5pm Friday 16 February 2024.

Membership \$10.00

Junior Membership (12-16 years) \$5

Pensioner \$5.00

ADMISSION AND CHARGES

NON-MEMBERS:

Adults: \$10

Children: Under 12 yrs free

Children: 12-16 yrs \$5

Family: \$25

Aged and Invalid Pensioners: \$5

Commercial Stands – frontage: \$5/m minimum \$35 (plus \$25 if own Public Liability Insurance to \$20,000,000 is not held)

Sideshow Stands: \$3/foot for side shows, van \$60/wk, 2 days \$20, 3 is \$30

Camping Fee: \$20/night

Stables: \$10/night

SHOW COMMITTEE

Patron: Len Guy

President: Harry Powell

Secretary: Pam Southwell

Assistant Secretary: Jane Phillips

Treasurer: Jim Larkin

Assistant Treasurer: Meghan Rains

Horse Secretary: Emma Staples

Assist Horse Secretary: Julie Gray, Eleanor Rapley

Assistant Treasurer: Howard Scifleet

Vice Presidents: Jack Larkin, Howard Scifleet

Disputes Committee: Larry Tolmie, Howard Scifleet, Tim Rains

Public Officer: Jim Larkin

Announcer: Bill Tatt

Ring Master: Larry Tolmie

Promotions: Jane Phillips

WHS Officers: Jim Larkin, Pam Southwell

THANK YOU TO OUR SPONSORS, VOLUNTEERS & ADVERTISERS

The Binnaway Show Society would like to thank all our supportive and valued sponsors and trophy donors. It is your generosity that allows us to promote and run our annual show. Please support the following businesses who support us:

Platinum Sponsor

- ❖ Newton's Mechanical Repairs

Diamond Sponsors

- ❖ ARTC
- ❖ John Webster
- ❖ Binnaway Rural Supplies

Young Judges Day Sponsors

- ❖ Nutrien Ag Solutions Dubbo
- ❖ Warren and Justine Croake
- ❖ Saunders Contracting
- ❖ Binnaway Central School
- ❖ Milling Stuart

Entertainment Sponsors

- ❖ Dafter's Quality Meats
- ❖ Sole Taxation
- ❖ Sydney Classic Car Restoration
- ❖ Binnaway Bowling Club

Gold Sponsors

- ❖ JTH Plumbing
- ❖ Guy Andrews Electrical
- ❖ Binnaway Pharmacy
- ❖ Jim Lyons Agency
- ❖ Coonabarabran Bakery
- ❖ Daryl Gray Transport
- ❖ Craig Schiemer
- ❖ Joblink Plus
- ❖ Larry Tolmie Agency
- ❖ Rod Pilon Transport

Silver Sponsors

- ❖ Country Style Simmental
- ❖ Roach's Home Timber and Hardware
- ❖ Bilby Blooms
- ❖ Em & M Photography
- ❖ Robertson's Motorcycles
- ❖ Rob Adams super spreading and fencing
- ❖ Bill Tatt
- ❖ Haynes Farm & Hardware

Art Show Sponsors

- ❖ Gooree Park

SPONSORS, ADVERTISERS AND SUPPORTERS

Ann Peterson
Australian Premier
Genetics
Ballimore Auctions
Barlow Peadon Schute Bell
Bilby Blooms
Bill Tatt
Binnaway Bowling Club
Binnaway Central School
Binnaway Fire Brigade
Binnaway Lions Club
Binnaway Men's Shed
Binnaway Pharmacy
Binnaway Preschool
Binnaway Railway
Barracks
Binnaway Rural Supplies
Break Thru Solutions
Christie & Hood
Clarke & Cunningham
Colin Landers
Colleen Beer
Coolah Veterinary Clinic
Coona Car Club
Coonabarabran Bakery
Country Style Simmental
Craig Schiemer Transport

Dafter's Quality Meats
Daryl Gray Transport
David Grant Agency
Dennis Todd
Dial Before You Dig
Don & Sarah Riley
Don MacDonald & Co
Em & M Photography
Garry & Karen Fogarty
Gooree Park
Guy Andrews Electrical
Harry Powell
Haynes Farm & Hardware
J Fenwick
Jim Lyons Agency
J & M Irons
Joblink Plus
John Webster
JTH Plumbing
Kate Clancy Horsemanship
Kenso Ag Care
Larry Tolmie Agency
Liberty Oil Australia
Malcolm & Denise Leader
Mary's Hairdressing
Meyers Motors

Milling Stuart Pty Ltd
Munnabah Santa Gertrudis
Newton's Mechanical Repairs
Nutrien Ag Solutions Dubbo
Pam Southwell
Prezzie's
River Road Transport
Roach's Hardware
Robertson's Motorcycles
Rob Adams
Rod Pilon Transport
Saunders Contracting
Sole Taxation Guyra
Staples Family
Sydney Classic Car
Restoration
Tom Robertson
Warren and Justine Croake
XLR8

John Webster Contracting Service

**FOR ALL SLASHING AND GRADER
REQUIREMENTS**

- **Friendly, efficient and reliable service**
 - **3 metre and 8 metre slashers**



**Phone John
6842 4416 / 0427 428 207**

Proud supporter of Binnaway Showground

BINNAWAY YOUNG JUDGES

Tuesday, 20th February 2024

commencing 8.30am

In conjunction with

Binnaway Central School

All Warrumbungle Shire

students welcome



The Binnaway Show Society would like to thank the following Young Judges Day Sponsors:

- Saunders Contracting
- Binnaway Central School
- NSW Department of Education
- Warren and Justine Croake
- Roaches Hardware

Thank you also to the producers who supply livestock as well as the judges, stewards and volunteers who kindly give up their time to assist us to provide an interesting, informative and educational day for all the students.





AVAILABLE FOR HIRE

*2 JOHN DEERE HEADER (AUTOSTEER)
WITH 40FT FRONTS AND A CANOLA FRONT.*

22 TON CHASER BIN AND TRACTOR.

*TRUCK & DOG - FOR CARTAGE
45FT STEP DECK WIDENING FLOAT.*

*CALL STEVE ON 0428482447
FOR AN OBLIGATION-FREE QUOTE.*



DAFTER'S QUALITY MEATS



QUALITY MEATS AND SMALLGOODS

A friendly and efficient team ready to provide all your fresh cuts of Beef, Lamb, Pork and Chicken for you and your family.

Specialists in serving Pubs, Clubs, Bistros, Takeaways, sporting events, local shows and all your raffle tray requirements. Across the Warrumbungle Shire with a delivery service also available.

Call in and support another great local business and say hello!

Another proud supporter of the **BINNAWAY SHOW**
52 Dalgarno St, Coonabarabran NSW

Ph: 6842 1163



Larry Tolmie



Office: 6844 1605
Mobile: 0427 441605
Fax: 6844 148805

AUCTIONEER
REAL ESTATE AGENT
STOCK AND STATION AGENT
ABN: 16 458 800 637

BINNAWAY

www.larrytolmie.com.au

AH 6844 1888
PO Box 15
Binnaway

Marketing your livestock to your advantage



- Selling Twice Weekly Dubbo Regional Stock Markets
- Selling Weekly Gunnedah Regional Stock Markets
- Premium Feeder Steer Buying Orders Available
- Regular Over the Hook Sales
- Genuine Enquiries for Properties Of All Sizes
- Prepare & Conduct Clearing Sales

With our service you grow



Coonabarabran Automobile
Restorers Society
In conjunction with Binnaway
PAH & I Show

**Are holding a Show and Shine Competition
10 Classes Saturday 24th February 2024**

**Donating to Riding for Disabled
Coonabarabran**

- A Motor Cycle Pre 1970
- B Motor Cycle Post 1969
- C Truck Minimum 2T GMV
Pre 1970
- D Truck Minimum 2T GMV
Post 1969
- E Ute or Panel Van Pre 1970
- F Ute or Panel Van Post 1969
- G Sedan Pre 1970
- H Sedan Post 1969
- J Non Historical, Modern
Hot Rod or Modified
- K Any vehicle pre 1950



**1st, 2nd & 3rd Ribbons all classes
Unique Winners Trophy classes A to K**

Entry to Show & Competition \$10 for vehicle and driver
additional occupants at standard gate charges.

Enter via the Park Street Show gate at Binnaway
and to assemble by 10 am.

GENERAL CONDITIONS

Special by-laws:

- Any child competing must be three years of age at the date of show.
- Only those competitors wearing a wrist band indicating a waiver has been signed will be accepted.
- Only competitors, their attendants holding horses and officials of the show shall be allowed to enter the ring enclosure.
- All exhibits not ready for judging will be disqualified even though the event (from any cause) is held later than shown.
- Every endeavor will be made to avoid the judging of two classes concurrently in which one exhibitor may be interested. The Committee, however, cannot accept any responsibility if the judging time happens to conflict with one or more classes or events.
- A maiden shall be a Horse, Galloway or Pony that has never won first prize in any agricultural show. An exhibit, which has won in a pair and/or fours class, is still considered a maiden or a novice as the case may be for a single class.
- A ringmaster must not compete at his or her own show.
- An intermediate hack is one that has not been placed 1st, 2nd or 3rd in an individual. Ridden hack class at any Royal show including the RNA Bathurst, Toowoomba and Launceston Royals or HOTY.
- The ringmaster reserves the right to refuse entry to the ring to anyone deemed to be under the influence of alcohol or any other drugs.
- Riding coats are to be worn at the discretion of the rider.

Championship Awards: The first prize winner in all riding classes and hack classes is eligible to compete for their respective Championship. In awarding the Reserve Champion the first prize winners in all rider classes and single hack classes, other than the competitor to which the Champion was awarded, shall be eligible to compete along with the second prize winner in the class in which the Champion was awarded the first prize.

All rules pertaining to horse events may be viewed at the Horse Secretary's Office.

Section A – HORSES

Ring Master: Larry Tolmie

For all enquiries please contact: Emma Staples 0448 032 087

ALL COMPETITORS COMPETE IN RING EVENTS AT THEIR OWN RISK

- Stewards to be at the secretary's office by 8am.
- Prize money will be paid by the Ring Steward on the day of the show.
- 15-minute break after Led classes.
- Waivers and Horse Health Declaration Form to be signed and wrist band acquired before competing - one waiver per person.
- Any child competing must be three years of age at date of show.
- All ring classes (breeds) can be split where needed.
- Stallion classes can be added to program if needed.
- LOCAL EVENTS: All horses, Galloways and ponies competing in local events both rider and horse must have resided within the Warrumbungle Shire Council and must have been on the property of the exhibitor for three months prior to the date of the show and stabled in the area.
- Supreme Champion led horse of the show (Open to all led champions).
- Supreme Champion Open Hack, only the first champion in each ring is eligible.
- Binnaway P.A.H & I Association Inc. will not be responsible for any accidents that may be caused through or by any exhibit and it shall be a condition of each entry that exhibitors shall hold the Association blameless and indemnify it against any legal proceedings arising from such accidents.
- Competitors must compete in headwear applicable to the event in which they are competing in per EFA guidelines.
- All under 17 years competitors must wear safety approved helmet.
- Headwear must comply with currently recognised standards.
- Stallions are required to be double tied and collared at all times.
- Open Hacks and Hunter Hacks can only compete in one section.
- Newcomer is a horse that has not been shown before under saddle, before the 1st January 2024 and is to be ridden in a snaffle bit.
- SHOW HUNTER: Is for hacks, Galloways & ponies 3 years and over. If any hack, Galloway or Pony compete in any Open hack class they are not eligible to compete in the show hunter or vice versa.
- Competitors who compete in ring 6 (no coats/vest ring) may not compete in any other ring other than ring 7 (Sporting). **Competitors competing in No Coats/Vests ring may purchase a full day pass to all events plus Sporting for \$20 (Separate coloured wrist band will be worn)**

RING 1 Commencing 8.30am

ENTRY FEE: \$2

PRIZES: 1st Ribbon & \$5, 2nd Ribbon, 3rd Ribbon, Champion \$15, Reserve Ribbon

- 1 Led Hack Mare or Filly over 15hh
- 2 Led Hack Gelding over 15hh
Champion and Reserve Champion
- 3 Led Thoroughbred Mare or filly
- 4 Led Thoroughbred Gelding
Champion and Reserve Champion
- 5 Led ANSA Mare
- 6 Led ANSA Gelding
- 7 Led ANSA Stallion/Colt
Champion and Reserve Champion

SUPREME LED HORSE OF THE SHOW

- 8 Adult rider 17 yrs and under 21 yrs
- 9 Adult rider 21 yrs and under 40 yrs
- 10 Adult rider over 40 yrs
Champion and Reserve Champion
- 11 Newcomer Hack 15hh n/e 16hh
- 12 Newcomer Hack over 16hh
Champion and Reserve Champion
- 13 Maiden Hack over 15hh has not won first as a hack at any show
- 14 Local Hack over 15hh horse & rider must have resided within Warrumbungle Shire Council for last 3 months prior to show
- 15 Intermediate Hack over 15hh
- 16 Open Hack over 15hh n/e 15.2hh
- 17 Open Hack over 15.2hh n/e 16hh
- 18 Open Hack over 16hh n/e 16.2hh
- 19 Open Hack over 16.2hh
- 20 Adult's Hack over 15hh, rider over 17 yrs
- 21 Child's Hack over 15hh, rider under 17 yrs
- 22 Open Hack (not won first in height classes today)
- 23 Open Hack second chance
Champion and Reserve Champion

SUPREME OPEN HACK

- 24 Ridden Thoroughbred Mare
- 25 Ridden Thoroughbred Gelding
Champion and Reserve champion
- 26 Ridden ANSA Mare
- 27 Ridden ANSA Gelding
- 28 Ridden ANSA Stallion/Colt
Champion and Reserve Champion

RING 2 Australian Stock Horses

ENTRY FEE: \$2-00

Stock horse prizemoney: 1st \$5, 2nd Ribbon, 3rd Ribbon, Champion \$15

Reserve champion Ribbon

Stock Horses Classes are sponsored by Malcolm and Denise Leader.

Australian Stock Horse entries must be registered or foal recorded.

LED AUST STOCK HORSES

- 30 Led ASH Yearling any sex
- 31 Led ASH 2 yrs any sex
- 32 Led ASH 3yrs any sex
- 33 Led ASH Stallion 4yrs and over
- 34 Led ASH Mare 4yrs and over
- 35 Led ASH Gelding 4yrs and over

CHAMPION AND RESERVE CHAMPION

- 36 Handler under 13 years
- 37 Handler 13yrs & under 18yrs

AUST STOCK HORSE HACK

- 38 Novice Hack
- 39 Hack 3yrs & under
- 40 Hack Stallion 4yrs & over
- 41 Hack Mare 4yrs & over
- 42 Hack Gelding 4yrs & over

CHAMPION AND RESERVE CHAMPION

AUST STOCK HORSE RIDDEN YOUTH

- 43 ASH Hack rider under 13 yrs
- 44 ASH Hack rider 13yrs & under 18yrs
- 45 ASH Working rider under 13yrs
- 46 ASH Working Rider 13yrs & under 18yrs

CHAMPION AND RESERVE CHAMPION

AUST STOCK HORSE WORKING

- 47 Novice Working
- 48 Working 3yrs & under
- 49 Working Stallion 4yrs & over
- 50 Working Mare 4yrs & over
- 51 Working Gelding 4yrs & over

CHAMPION AND RESERVE CHAMPION REUBEN LEADER MEMORIAL TROPHY

RING 3 - GALLOWAY

ENTRY FEE: \$2-00

PRIZES: 1st Ribbon & \$5, 2nd Ribbon, 3rd Ribbon, Champion \$15, Reserve Ribbon

60 Led Galloway Mare or Filly 14hh n/e 15hh

61 Led Galloway Gelding 14hh n/e 15hh

Champion and Reserve Champion

62 Led Arab, Anglo, Part or Derivative Mare or Filly

63 Led Arab, Anglo, Part or Derivative Gelding

Champion and Reserve Champion

64 Led Saddle Pony Mare or Filly under 14.2hh

65 Led Saddle Pony Gelding under 14.2hh

Champion and Reserve Champion

66 Led Riding Pony Mare or Filly under 14.2hh

67 Led Riding Pony Gelding under 14.2hh

Champion and Reserve champion

SUPREME LED HORSE OF THE SHOW

68 Girl Rider 6 yrs & under 9 yrs

69 Girl Rider 9 yrs & under 12 yrs

Champion and Reserve Champion Junior Girl rider

70 Girl Rider 12 yrs and under 15 yrs

71 Girl Rider 15 yrs and under 17 yrs

Champion and Reserve Champion Senior Girl Rider

72 Newcomer Galloway

73 Maiden Galloway 14hh n/e 15hh has not won first prize at an agricultural show

74 Local Galloway 14hh n/e 15hh Horse & rider must have resided within Warrumbungle Shire for 3 months prior to show

75 Intermediate Galloway 14hh n/e 15hh

76 Open Lightweight Galloway 14hh n/e 14.2hh

77 Open Heavyweight Galloway 14hh n/e 14.2hh

78 Open Lightweight Galloway 14.2hh n/e 15hh

79 Open Heavyweight Galloway 14.2hh n/e 15hh

80 Adult's Galloway 14hh n/e 15hh, rider over 17yrs

81 Child's Galloway 14hh n/e 15hh, rider under 17yrs

82 Open Galloway (not won first in height class today)

83 Open Galloway second chance

Champion and Reserve Champion

SUPREME OPEN HACK

84 Ridden Arab, Anglo, Part and Derivative Mare or Filly

85 Ridden Arab, Anglo, Part and Derivative Gelding

Champion and Reserve Champion

86 Ridden Saddle Pony Mare n/e 14.2hh

87 Ridden Saddle Pony Gelding n/e 14.2hh

Champion and Reserve Champion

88 Ridden Riding Pony Mare n/e 14.2hh

89 Ridden Riding Pony Gelding n/e 14.2hh

Champion and Reserve Champion

RING 4: PONIES

ENTRY FEE: \$2

PRIZES: 1st Ribbon & \$5, 2nd Ribbon, 3rd Ribbon, Champion \$15, Reserve Ribbon

90 Led Pony Mare or Filly

91 Led Pony Gelding

Champion and Reserve Champion Led Pony

92 Led Welsh any sex Part A

93 Led Welsh any sex Part B

94 Led Welsh any sex Part C

95 Led Welsh any sex Part D

Champion and Reserve Champion Part A, B, C and D

96 Led Part Welsh Mare or Filly

97 Led Part Welsh Gelding

Champion and Reserve Champion

SUPREME LED HORSE OF THE SHOW

98 Boy Rider 6 yrs & under 9 yrs

99 Boy Rider 9 yrs & under 12 yrs

Champion and Reserve Champion Junior Boy Rider

100 Boy Rider 12 yrs & under 15 yrs

101 Boy Rider 15 yrs & under 17 yrs

Champion and Reserve Champion Senior Boy Rider

102 Newcomer Pony under 12.2hh

103 Newcomer Pony 12.2hh n/e 14hh

Champion and reserve Champion Newcomer Pony

104 Maiden Pony n/e 14hh has not won first as a hack at any show

105 Local Pony n/e 14hh, Horse & rider must have resided within Warrumbungle Shire for past 3 months prior to show.

106 Intermediate Pony n/e 14hh

107 Open Pony under 12hh

108 Open Pony 12hh n/e 12.2hh

109 Open Pony 12.2hh n/e 13hh

110 Open Pony 13hh n/e 13.2hh

111 Open Pony 13.2hh n/e 14hh

112 Adult's Pony under 14hh, rider over 17 yrs

113 Child's Pony under 14hh, rider under 17 yrs

114 Open Pony (not won first in height class today)

115 Open Pony second chance

Jodi Scott Memorial Trophy donated by Mr & Mrs Rollinghoff

Champion and Reserve Champion Open Pony

SUPREME OPEN HACK

116 Ridden Welsh any sex Part A

117 Ridden Welsh any sex Part B

118 Ridden Welsh any sex Part C

119 Ridden Welsh any sex Part D

Champion and Reserve Champion Ridden Welsh Pony Part A, B, C and D

120 Ridden Part Welsh Mare

121 Ridden Part Welsh Gelding

Champion and Reserve Champion

RING 5 HUNTER HACKS

ENTRY FEE: \$2

PRIZES: 1st Ribbon & \$5, 2nd Ribbon, 3rd Ribbon, Champion \$15, Reserve Ribbon

Please visit the AHHA webpage or Facebook page for further information.

130 Led show Hunter Pony under 12.2h

131 Led show Hunter Pony 12.2hh n/e 14hh

Champion/Reserve Champion Led Pony

132 Led show Hunter Galloway 14hh n/e 14.2hh

133 Led show Hunter Galloway 14.2hh n/e 15hh

Champion/Reserve Champion Led Galloway

134 Led show Hunter horse 15hh n/e 16hh

135 Led show Hunter horse over 16hh

Champion/Reserve Champion Led Horse

SUPREME CHAMPION LED HUNTER

136 Newcomer Hunter Pony under 12hh

137 Newcomer Hunter Pony 12.2hh n/e 14hh

Champion/Reserve Champion Newcomer Pony

138 Intermediate Show Hunter Pony n/e 14hh

139 Show Hunter Pony under 12hh

140 Show Hunter Pony 12hh n/e 12.2hh

141 Show Hunter Pony 12.2hh n/e 13hh

142 Show Hunter Pony 13hh n/e 13.2hh

143 Show Hunter Pony 13.2hh n/e 14hh

144 Adult Hunter Pony under 14hh rider over 17 yrs

145 Child's Hunter Pony under 14hh rider under 17 yrs

146 Local Hunter Pony

Champion/Reserve Champion Hunter pony

147 Member's AHSHA Registered Show Pony n/e 14hh

148 Member's AHSHA Registered Show Hunter Pony n/e 14hh

149 Member's AHSHA Registered Hunter Pony n/e 14hh

Champion /Reserve Champion AHSHA Member's Registered Pony n/e 14hh

150 Newcomer Hunter Galloway 14hh n/e 14.2hh

151 Newcomer Hunter Galloway 14.2hh n/e 15hh

Champion/Reserve Champion Newcomer Galloway

152 Intermediate Show Hunter Galloway 14hh n/e 15hh

153 Show Hunter Galloway 14hh n/e 14.2hh

154 Show hunter Galloway 14.2hh n/e 15hh

155 Adult Hunter Galloway 14hh n/e 15hh rider over 17 Yrs

156 Child's Hunter Galloway 14hh n/e 15hh rider under 17 Yrs

157 Local Hunter Galloway

Champion/Reserve Hunter Galloway

158 Member's AHSHA Registered Show Galloway over 14hh and n/e 15hh

159 Member's AHSHA Registered Show Hunter Galloway over 14hh and n/e 15hh

160 Member's AHSHA Registered Hunter Galloway over 14hh and n/e 15hh

Champion /Reserve Champion AHSHA Member's Registered Galloway n/e 15hh

161 Newcomer Hunter Horse 15hh n/e 16hh

162 Newcomer Hunter Horse over 16hh

Champion/Reserve Champion Newcomer Hunter Horse

- 163 Intermediate Show Hunter Horse over 15hh
- 164 Show Hunter Horse 15hh n/e 15.2hh
- 165 Show Hunter Horse over 115.2hh n/e 16hh
- 166 Show Hunter Horse 16hh n/e 16.2hh
- 167 Show Hunter Horse over 16hh
- 168 Local Hunter Horse
- 169 Adult Hunter Horse over 15hh rider over 17 Yrs
- 170 Child's Hunter Horse over 15hh rider under 17 Yrs
Champion/Reserve Champion Hunter Horse
- 171 Member's AHSHA Registered Show Horse over 15hh
- 172 Member's AHSHA Registered Show Hunter over 15hh
- 173 Member's AHSHA Registered Hunter Horse over 15hh
Champion/Reserve Champion AHSHA Member's Registered Horse over 15hh
AHSHA SUPREME CHAMPION HUNTER HORSE OF THE SHOW
SUPREME HUNTER HORSE OF THE SHOW

RING 6 ~ NO COATS/VESTS - Sponsored by Staples Family

Led children not eligible for Hack Classes. Led riders only may purchase individual tickets \$1 each as they have limited events

Competitors in No coats/vests ring may purchase a full day pass to all events plus Sporting for \$20 (Separate coloured wrist band will be worn)

PRIZES: 1st Ribbon & \$2, 2nd Ribbon, 3rd Ribbon

- 170 Tiny tots 3 yrs & under 7 yrs, not led
- 171 Boy or girl rider 7 yrs & under 9 yrs
- 172 Boy or girl rider 9 yrs & under 12 yrs
- 173 Boy or girl rider 12 yrs & under 15 yrs
- 174 Boy or girl rider 15 yrs & under 17 yrs
- 175 Bareback rider 3 yrs & under 7 yrs
- 176 Bareback rider 7 yrs & under 9 yrs
- 177 Bareback rider 9 yrs & under 12 yrs
- 178 Bareback rider 12 yrs & under 15 yrs
- 179 Bareback rider 15 yrs & under 17 yrs
- 180 Pair of riders 3 yrs & under 7 yrs
- 181 Pair of riders 7 yrs & under 9 yrs
- 182 Pair of riders 9 yrs & under 12 yrs
- 183 Pair of riders 12 yrs & under 15 yrs
- 184 Pair of riders 15 yrs & under 17 yrs
- 185 Pony Hack not ex 14hh
- 186 Galloway Hack 14hh not ex 15hh
- 187 Hack over 15hh
- 188 Pleasure Pony not ex 14hh, to be ridden one handed and in a snaffle bit
- 189 Pleasure Galloway 14hh not ex 15hh, to be ridden one handed and in a snaffle bit
- 190 Pleasure Hack over 15hh, to be ridden one handed and in a snaffle bit
- 191 Tiny tots 3 yrs & under 7 yrs, to be led
- 192 Best Horse or Pony suited for a child 3 yrs & under 7 yrs - led
- 193 Best Horse or Pony suited for a child 3 yrs & under 7 yrs - not led
- 194 Best Horse or Pony suited for a child 7 yrs & under 9 yrs
- 195 Best Horse or Pony suited for a child 9 yrs & under 12 yrs

- 196 Best Horse or Pony suited for a child 12yrs & under 15yrs
- 197 Best Horse or Pony suited for a child 15yrs and under 17yrs
- 198 Best Fancy Dress mount and rider - use your imagination and dress your pony or horse and yourself.

Sponsored by Pam Southwell

Most Successful competitor in Ring 6 excluding led events

RING 7 ~ SPORTING

Nominations for Sporting after 11.30am at office.

Nominations \$2

- 210 Boy or girl Led Bending race 3 yrs & under 7 yrs
- 211 Boy or girl Led Flag race 3 yrs & under 7 yrs
- 212 Boy or girl Led Barrel race 3 yrs & under 7 yrs
- 213 Boy or girl Bending race 3 yrs & under 7 yrs
- 214 Boy or girl Bending race 7 yrs & under 9 yrs
- 215 Boy or girl Bending race 9 yrs & under 12 yrs
- 216 Boy or girl Bending race 12 yrs & under 15 yrs
- 217 Boy or girl Bending race 15 yrs & under 17 yrs
- 218 Boy or girl Flag race 3 yrs & under 7 yrs
- 219 Boy or girl Flag race 7 yrs & under 9 yrs
- 220 Boy or girl Flag race 9 yrs & under 12 yrs
- 221 Boy or girl Flag race 12 yrs & under 15 yrs
- 222 Boy or girl Flag race 15 yrs & under 17 yrs
- 223 Boy or girl Barrel race 3 yrs & under 7 yrs
- 224 Boy or girl Barrel race 7 yrs & under 9 yrs
- 225 Boy or girl Barrel race 9 yrs & under 12 yrs
- 226 Boy or girl Barrel race 12 yrs & under 15 yrs
- 227 Boy or girl Barrel race 15 yrs & under 17 yrs

Encouragement Award for Sporting competitor under 17 yrs Excluding Led competitors

Donated by John and Maureen Irons



License No: MVTC123946

For all your restoration and insurance repairs pop in and see Grant and the team at Sydney Classic Car Restoration.

All our repairs are carried out to the highest standards.

With all restoration repairs being carried out using traditional metal finishing and lead wiping techniques.



Grant: 0414567084

13 Ulan Street Coonabarabran NSW 2357

email: sydneycr@gmail.com

Section B - BINNAWAY ANNUAL SHOW 2024 BEEF CATTLE

Special Conditions

- All cattle must have permanent NLIS RFID identification.
- Exhibitors must have NVD and Waybill or a Transport Stock Statement for movement of cattle to and from the Showground PIC NE161065. Exhibitors must also provide destination (ie home) PIC.
- A copy of the NVD must be provided to the cattle steward
- All stud cattle to be led and will not be judged against un-led cattle.
- Bulls over 12 months must have a nose ring.
- All other cattle must have nose clips.
- Judging shall commence at 9am in the order set out below.
- Entries would be appreciated prior to the show. Please contact stewards.
- A wash bay area is available, and power is accessible in the shed.
- Bedding will be provided.
- Age of cattle to be taken as the day of the show.

ALL EXHIBITORS MUST SUPPLY A DECLARATION UNDER THE JOHNE'S PESTIVIRUS DISEASE ACT

Waiver forms can be downloaded from www.agshowsnsw.org.au

Section B1: Led Cattle

Stewards: Garry Wilkinson 0427 824 598

Entry Fee: \$5.00

The Columbian Shield donated by the Wilkinson Family will be awarded to the most successful exhibitor in the cattle section.

The winner's name will be inscribed on the shield. This will be retained by the Society unless the shield is won for three years in succession, or five years in all by the same exhibitor.

Point Score:	1st = 3 points	2nd = 2 points	3rd = 1 point
	Champion = 3 points	Reserve = 2 points	Grand Champion = 4 points

BRITISH BREEDS

- 1 Bull under 12 months
- 2 Bull 12 months and under 16 months
- 3 Bull 16 months and under 20 months
Junior Champion Bull **Reserve Champion Junior Bull**
- 4 Bull 20 and under 24 months
- 5 Bull 24 months and over
Senior Champion Bull **Reserve Champion Senior Bull**
Grand Champion Bull
- 6 Female under 12 months
- 7 Female 12 months and under 16 months
- 8 Female 16 months and under 20 months
Champion Junior Female **Reserve Champion Junior Female**
- 9 Female 20 months and under 24 months
- 10 Female 24 months and over
Champion Senior Female **Reserve Champion Senior Female**
Grand Champion Female

EUROPEAN BREEDS

- 11 Bull under 12 months
- 12 Bull 12 months and under 16 months
- 13 Bull 16 months and under 20 months
Champion Junior Bull **Reserve Champion Junior Bull**
- 14 Bull 20 months and under 24 months
- 15 Bull 24 months and over
Champion Senior Bull **Reserve Champion Senior**
Bull Grand Champion Bull
- 16 Female under 12 months
- 17 Female 12 months and under 16 months
- 18 Female 16 months and under 20 months
Champion Junior Female **Reserve Champion Junior Female**
- 19 Female 20 months and under 24 months
- 20 Female 24 months and over
Champion Senior Female **Reserve Champion Senior Female**
Grand Champion Female

BOS INDICUS BREEDS

- 21 Bull under 12 months
- 22 Bull 12 months and under 16 months
- 23 Bull 16 months and under 20 months
Champion Junior Bull **Reserve Champion Junior Bull**
- 24 Bull 20 months and under 24 months
- 25 Bull 24 months and over
Champion Senior Bull **Reserve Champion Senior**
Bull Grand Champion Bull **Reserve Grand Champion Bull**
- 26 Female under 12 months
- 27 Female 12 months and under 16 months
- 28 Female 16 months and under 20 months
Champion Junior Female **Reserve Champion Junior Female**
- 29 Female 20 months and under 24 months
- 30 Female 24 months and over
Champion Senior Female **Reserve Champion Senior**
Female Grand Champion Female

INTER BREED

- 31 Group of two bulls under 24 months
- 32 Group of two females under 24 months
- 33 Group of two females and one bull, or two bulls and one female
Supreme Champion Female
Supreme Champion Bull
Most Successful Exhibitor - The Columbian Shield
- 34 Pen of 1-3 steers any age any breed
- 35 Pen of 1-3 heifers any age any breed
- 36 Most productive cow and calf any breed any age
- 37 Junior Paraders
- 38 Junior Judging
- 39 Junior Herdsman (Decorated animal to character or person) \$50 prize money donated by Gary Wilkinon

Most outstanding exhibit any section prize \$100 donated by Binnaway Show Society

Section C - BINNAWAY ANNUAL SHOW 2024 SHEEP

SHEEP- BRITISH AND AUSTRALIAN BREEDS

Steward: Colin Landers 6844 1653 Entry Fee: \$2.00

- All sheep must be penned ready for judging by 9am on the morning of the show.
- First, second and third prize ribbons will be awarded.
- Champion and Reserve Champion ram and ewe in all sections will also be awarded.
- All sheep entered in these classes must be registered in the recognized flock book.
- All sheep must be from accredited free studs only.
- No ram will be permitted unless papers are presented.

Prizes: Champion \$10

BORDER LEICESTER

- 1 Ram lamb showing milk teeth only
- 2 Ram, 2 tooth
- 3 Ram, 4 tooth and over
- 4 Shorn Ram showing milk teeth only (Must be evenly shorn with not more than 4cm wool)
- 5 Pair Rams any age
Champion Ram- Ribbon **Reserve Champion Ram - Ribbon**
- 6 Ewe lamb showing milk teeth only
- 7 Ewe, 2 tooth
- 8 Ewe, 4 tooth and over
- 9 Shorn Ewe showing milk teeth only (Must be evenly shorn with not more than 4cm wool)
- 10 Pair of Ewes any age
- 11 Group 1 Ram and 2 Ewes any age
Champion Ewe- Ribbon **Reserve Champion Ewe - Ribbon**

DORSET HORN

- 12 Ram lamb showing milk teeth only
- 13 Ram 2 tooth
- 14 Ram 4 tooth and over
- 15 Ram any age, shorn, not more than 2cm wool
- 16 Pair Rams any age
Champion Ram- Ribbon **Reserve Champion Ram - Ribbon**
- 17 Ewe lamb showing milk teeth only
- 18 Ewe 2 tooth
- 19 Ewe 4 tooth and over
- 20 Ewe any, age, shorn, not more than 2cm wool
- 21 Pair Ewes any age
- 22 Group 1 Ram and 2 Ewes any age
Champion Ewe- Ribbon **Reserve Champion Ewe - Ribbon**

POLL DORSET

- 23 Ram lamb showing milk teeth only
- 24 Ram 2 tooth
- 25 Ram 4 tooth and over
- 26 Ram any age, shorn, not more than 2cm wool
- 27 Pair Rams any age
Champion Ram – Ribbon **Reserve Champion Ram - Ribbon**
- 28 Ewe lamb showing milk teeth only
- 29 Ewe 2 tooth
- 30 Ewe 4 tooth and over
- 31 Ewe any, age, shorn, not more than 2cm wool
- 32 Pair Ewes any age
- 33 Group 1 Ram and 2 Ewes any age
Champion Ewe –Ribbon **Reserve Champion Ewe - Ribbon**

WHITE SUFFOLK

- 34 Ram lamb showing milk teeth only
35 Ram 2 tooth
36 Ram 4 tooth and over
37 Ram any age, shorn, not more than 2cm wool
38 Pair Rams any age
Champion Ram- Ribbon Trophy Colin Landers **Reserve Champion**
39 Ewe lamb showing milk teeth only
40 Ewe 2 tooth
41 Ewe 4 tooth and over
42 Ewe any age, shorn, not more than 2cm wool
43 Pair Ewes any age
44 Group 1 Ram and 2 Ewes any age
Champion Ewe- Ribbon **Ribbon Reserve Champion**

SUFFOLK

- 45 Ram lamb showing milk teeth only
46 Ram 2 tooth
47 Ram 4 tooth and over
48 Ram any age, shorn, not more than 2cm wool
49 Pair Rams any age
Champion Ram-Ribbon **Reserve Champion - Ribbon**
50 Ewe lamb showing milk teeth only
51 Ewe 2 tooth
52 Ewe 4 tooth and over
53 Ewe any age, shorn, not more than 2cm wool
54 Pair Ewes any age
55 Group 1 Ram and 2 Ewes any age
Champion Ewe –Ribbon **Reserve Champion - Ribbon**

ANY OTHER BREED

- 56 Ram showing milk teeth only
57 Ram 2 tooth
58 Ram 4 tooth and over
59 Pair Rams any age
Champion Ram-Ribbon **Reserve Champion - Ribbon**
60 Ewe showing milk teeth only
61 Ewe 2 tooth
62 Ewe 4 tooth and over
63 Pair Ewes any age
64 Group 1 Ram and 2 Ewes any age
Champion Ewe-Ribbon **Reserve Champion - Ribbon**

MOST SUCCESSFUL EXHIBITOR OVER ALL | ALL STUDS MUST BE REGISTERED

INTERBREED SHEEP MEAT TROPHY (GROUP)

- 65 Group of 1 Ram and 2 Ewes - Trophy Donated by Denis Todd
Interbreed Champion Ram **Interbreed Champion Ewe**
Grand Champion Ram
Grand Champion Ewe sponsored by Braemer Poll Dorset Stud
Reserve Grand Champion Ram **Reserve Grand Champion Ewe**
The Ross Bull Memorial Shield for the Supreme Interbreed Exhibit of the Show
66 Junior Handler under 13yr
Sponsored by Colin Landers
67 Junior Handler 13yrs & over
Sponsored by Colin Landers

Section C - BINNAWAY ANNUAL SHOW 2024

PRIME LAMBS

Stewards: Howard Scifleet 68441539 Tim Kemp 68441454

Entry Fee \$2

1st prize ribbon, 2nd prize ribbon, 3rd prize ribbon

To be judged on meat carcass traits only

- 107 Pen 3 crossbred ewes 2 tooth or under
 - 108 Pen 3 crossbred ewes 4 tooth or under
 - 109 Pen 3 prime lambs
 - 110 Pen 3 prime lambs 45kg and over live weight
- Prize for overall winner Hoof: Harry Powell**



PREZZIES
Gifts with a difference

**RHONDA JEWISS
LEONIE JENKINS**

**36 John Street,
Coonabarabran, 2357.
Ph/Fax: 02 6842 2660**

Junior Aspiring Livestock Auctioneers Competition

2:30pm at the Shearing Stand



Age categories

- 12 under 15
- 15 & under 18
- 18 & under 25

Names to secretary's office by 12pm
Gold coin donation to enter
SPONSORED BY BILL TATT 0429 843 803

HHH

HAYNES FARM & HARDWARE

- Rural Merchandise
- Agronomy Service
- Water Systems
- Bulk Fertiliser
- Hardware
- Electrical & Whitegoods
- Ready Mix Concrete
- Castrol Oils
- Stihl Dealership



Ph 02 6377 1005

admin@haynesfarm.com.au

51 - 53 Binnia St Coolah NSW 2843

MILLING STUART PTY LTD



STOCK, STATION, REAL ESTATE AGENTS & AUCTIONEERS

PRIME CATTLE & SHEEP SALES

Wednesday Fortnightly at 11.30am

MONTHLY STORE CATTLE SALES

Angus Stuart: 0427 751009

Jamie Stuart: 0427 467322

34 BOLARO STREET, DUNEDOO

PH: 0263751009

www.millingstuart.com.au

rma network.
Independent Livestock & Property Agents



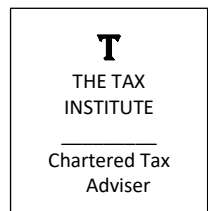
Just Tax, No Bull

RURAL TAXATION SPECIALISTS

Sole Taxation can assist you with ...

- Individual Returns
- Financial Statements
- Capital Gains Tax
- Business Restructuring
- SMSF
- Payroll
- Business Returns
- Taxation Planning
- Complex Tax Issues
- Business Set-up
- Bookkeeping

We can arrange a meeting to suit your situation



Visit us in our new premises at ...

8 Bradley Street, Guyra
: 0418 650 059
: csole@soletaxation.com.au
Coonabarabran Office : 6842 3935

BOER MEAT GOAT EXHIBITION



Check out the display of locally bred boer goats in the sheep pavilion.

Learn about the breed traits and discuss with owner Chris Perrett.



ROACH'S



It all starts at Home

Meyer's Motors Binnaway



Shell Card
Accepted

Ph: 68 441607
Fax: 68 441375
Mob: 0412821149

TRADING HOURS

Monday to Friday: 7.30 am to 5.00 pm

Saturday: 8 am to 12 noon

Sunday: **CLOSED**

Authorised Inspection station

Pink & Blue Slips & Gas Cars

Mechanical repairs

On all makes and models

Petrol & Diesel

We can service your vehicle

While under manufacturers warranty

Service & Re Gas Air Conditioners

Fuel & oil

General spares & supplies

Batteries & tyres & steel

If we Haven't got it we can try & get it

Agents for

Shell Oil's and Fuel

Ultra Oil

Supergas swap and refills

Bare co products

Come In and say hi to

Matt & Annie

DAVID GRANT

Livestock & Real Estate Agency

PO Box 581, Coonabarabran NSW 2357

grantd@bigpond.net.au

* Livestock & Real Estate Sales * Preparation of stock for market
* Calf marking * Preg Testing * Contract Mustering * Livestock
finance available (Conditions apply) * Auctions Plus accredited
Accessor * Feeder and over the hook markets with access to
Dubbo, Dunedoo, Coonamble, Gunnedah, Narrabri and
Tamworth selling centres for prime and store sales. * Livestock
Insurance

Datamars / Zee Tags

Retention readability reliability

NLIS, & Visual Tags

For Cattle

Agent for Tally Tags

For Sheep

Chemvet Australia

*Livestock Drench and
accessories, Dog wormers*

0439 421 436

Servicing the Rural Sector

rma network.

Accredited Member



Welcome to **BINNAWAY BOWLING CLUB**

OPEN 7 DAYS

**Family-friendly environment with
great beer and awesome food!**

**BISTRO | RAFFLES | PLAYGROUND
MEETING/ FUNCTION SPACE
SOCIAL BOWLS + COMPETITIONS**



BISTRO

Friday: 6pm - 8pm

Sunday: 12pm - 2pm

RAFFLES

Friday: 8pm

Sunday: 5pm

BOWLS

Friday: 6pm

Sunday: 3pm



P. 02 6844 1524

| 50-52 Bullinda St, Binnaway





COOLAH VETERINARY CLINIC

Coolah (02) 6377 1258

Coonabarabran (02) 6842 1251

Merriwa (02) 6548 2452

Find us on Facebook:
@coolahvets

Coolah

Mon-Fri: 8.30am - 5.30pm

Sat-Sun: Closed

Coonabarabran

Mon-Fri: 9.00am - 5.00pm

Sat-Sun: Closed

Merriwa

Mon-Fri: 10.00am - 4.00pm

Sat-Sun: Closed



BOB FENWICK MEMORIAL YARD DOG COMPETITION

TO BE RUN UNDER NSW YARD DOG ASSOCIATION RULES

TRIAL TO COMMENCE at 7.30am

JUDGES TALK 7.15am

PRE-ENTRIES CLOSE MONDAY 19th FEBRUARY 2024

ENTRIES TO BE PAID FOR ON SHOW DAY, BEFORE COMMENCEMENT OF TRIALS

TRIAL SPONSORS

Major Sponsor: Craig Schiemer Transport

Sponsors: Coprice, Ridleys

TOTAL PRIZE MONEY \$850

Event	Junior Handler (under 16)	Local	Maiden	Novice	Open
Prize money	\$150	\$100	\$150	\$200	\$250
Entry Fee	\$5	\$8	\$8	\$8	\$10

The show committee reserves the right to alter the program at any time.
Bitches in oestrus not permitted on the grounds.

**BOTH DOG AND HANDLER FOR LOCAL EVENTS MUST RESIDE
WITHIN WARRUMBUNGLE SHIRE FOR THREE MONTHS PRIOR TO
SHOW**

ALL HANDLERS AND DOGS COMPETE AT THEIR OWN RISK – WAIVER TO BE SIGNED



Like us on  

02 6884 1004

Chad Wool Pty Ltd

When the hard work is done...
Reap the rewards here...

WOOL BROKERS & WOOL BUYERS
Lasercan Testing • Cash Settlement • On Farm Pick-up

Dubbo Parais Lane Don & Julie Chad Tim Blackman	Walgett Carinda Road Grant Flechtner 0430 279 398	Don 0427 459 766 02) 6882 2587 Ab: 6887 3695 Fax: 5684 1816
---	---	--

Email: chadwool@nsw.com.au



NUTRIEN AG SOLUTIONS DUBBO

PH: 02 6841 1000

For the largest range of rural merchandise and fertiliser along with all your insurance, real estate, farm services, finance, livestock and wool requirements, look to the friendly team at Nutrien today.



Section E - BINNAWAY ANNUAL SHOW 2024

FARM & GARDEN PRODUCE

Steward: Elizabeth Simmons

Entry Fee: \$2.00 School Section – under 15 \$0.50

Entries to be received by the steward 7:30 to 9am on Saturday, 24 February

All classes to be judged as per schedule

Prizes: 1st \$5 + Certificate; 2nd Certificate; 3rd Certificate

Group A

- 1 Best 6 hen eggs
- 2 Best 6 eggs (other)

Group B

- 3 Best collection of fruit (not less than 5 varieties)
- 4 Best 3 stone fruit (peach, nectarine, apricot or plum)
- 5 Best 3 pome fruit (apple, pear or quince)
- 6 Best 3 citrus fruit (lime, lemon, orange or mandarin)
- 7 Best bunch of grapes
- 8 Best rockmelon
- 9 Best watermelon
- 10 Best 3 of any other fruit
- 11 Best collection of vegetables (not less than 5 varieties)
- 12 Biggest tomato
- 13 Best 4 Tomatoes
- 14 Best 10 small tomatoes (Tommy Toe, Roma and Cherry types)
- 15 Best 2 apple cucumbers
- 16 Best 2 long green or Lebanese cucumber
- 17 Best 2 capsicums or chillies
- 18 Best bunch radishes
- 19 Best bunch beetroot
- 20 Best marrow
- 21 Best gramma
- 22 Best 3 onions (any variety)
- 23 Best bunch onions (shallots, spring or leek)
- 24 Best any other vegetable
- 25 Heaviest Field Pumpkin
- 26 Best Zucchini
- 27 Best Queensland Blue Pumpkin
- 28 Best Butternut Pumpkin
- 29 Novelty animal made from fruit and/or vegetables
- 30 Best Honey
- 31 Best any fruit
- 32 Best bunch Spinach, Kale or Chard
- 33 Best bunch rhubarb
- 34 Best bunch of mixed herbs

Section F - HORTICULTURE

Stewards: Lyn Phillips and Edna Fleming

Entry Fee: \$2.00

Entries to be received in main pavilion between 7.30am to 9am 24 February

Entries must be in one name only.

All classes to be judged as per schedule.

Prizes: 1st \$5 + Certificate; 2nd Certificate; 3rd Certificate.

Cut Flowers

Definitions:

- AOV - Any Other Variety than mentioned in the schedule.
- Distinct - Each cut must be a different colour or variety.
- All stems should be as long as possible and must be in water.

Roses

Classes 1 and 2 must be disbudded

- 1 One exhibition rose
- 2 One cut Floribunda or Polyantha rose
- 3 One cut miniature rose

Champion rose - Cash Prize \$10

Mixed Cut Flowers & Shrubs

- 4 Three cuts French or African Marigolds
- 5 Three cut Petunia
- 6 One cut Ivy Geranium - flower/s & foliage
- 7 One cut Geranium - flower/s & foliage
- 8 One cut of Australian Natives - flower/s & foliage
- 9 One cut flower, AOV, not mentioned in schedule

Most Successful Exhibitor Classes 4-9

Decorative Section

Definitions:

- A Bowl is approximately twice as wide as high.
- Bowl and Basket arrangements must be able to be viewed from all sides.
- No embellishments allowed unless stated.

10 Arrangement of foliage

11 Exhibitors choice - flowers, foliage, dried or fresh

Classes 10-11 Embellishments allowed

12 Free expression

13 Miniature arrangement not more than 10cm (4") high

14 Arrangement in a kitchen utensil

Decorative section Classes 10 – 11

Champion exhibit classes 12 – 14 Cash Prize \$10

Pot Plants

The exhibitor must have grown all pot plants for at least three months prior to the show.

15 One pot decorative foliage plant

16 One pot flowering plant in flower

Most Successful Exhibitor Pot Plants

Children's Section - Under 16 Years

Entry Fee: **\$1.00**

First prize \$3 + Certificate, 2nd Certificate, 3rd certificate Ribbon for Champion

17 Arrangement around a candle

Most successful Exhibitor Children's section

Trophy donated by Edna Fleming



Section G - JAMS & SAUCES

Steward: Bernie Simmons

Entry Fee: \$2.00

Entries to be handed to the steward in main pavilion 7.30am & 9am, 24 February.

No items are to be removed before 3.00 pm on show day.

All classes to be judged as per schedule.

Any size jar up to 500 grams, No gingham covers or wax.

All sauces to be in bottles.

Prizes: 1st \$5 + Certificate; 2nd Certificate; 3rd Certificate

- 1 Apricot Jam
- 2 Marmalade (any variety)
- 3 Fig Jam
- 4 Plum Jam
- 5 Melon Jam
- 6 Jar of jam any other variety
- 7 Jar of Pickles, any variety
- 8 Jar of Relish, any variety
- 9 Jar of Chutney, any variety
- 10 Bottle of Sauces, any variety
- 11 Jar of preserved fruit
- 12 Jar or preserved vegetables
- 13 Any other conserve
- 14 Jar of pickled vegetables
- 15 Jar of Jelly or Paste, sweet or savoury
- 16 Berry Jam any variety
- 17 Any citrus curd or butter

Champion Exhibit - Cash Prize \$10

Section H - COOKING

Stewards: Cathy Heffernan

Entry Fee: \$2.00

Entries to be handed to the steward at main pavilion between 7:30am

and 9am on Saturday, 24 February. No two entries to be the same

mixture in one class. No ring tins in any class. All classes to be judged as

per schedule.

Prizes: 1st \$5 + Certificate; 2nd Certificate; 3rd Certificate. Ribbon for Champion

- 1 Fruit cake, ½ lb mixture
 - 2 Boiled fruit cake
- Champion Fruit Cake classes 1-2 - Cash Prize \$10**
- 3 Mud cake
 - 4 Banana cake, iced
 - 5 Orange cake, iced
 - 6 Chocolate cake, iced
 - 7 Plain butter cake, iced
 - 8 Novelty cake, decorated
 - 9 Chocolate Cake made by a man iced **Cash Prize \$20 by Binnaway Show Society**

- 10 Six decorated cup cakes
- 11 Sponge sandwich, not iced, jam filled
- 12 Six scones plain, pumpkin or date
- 13 Six plain patty cakes, not iced (not exhibited in papers)
- 14 Six lamingtons
- 15 Six pikelets
- 16 Best slice any variety

Most successful exhibitor - Classes 1-16

Junior Section

Entry Fee: \$1.00

Prizes: 1st \$3 + Certificate, 2nd Certificate, 3rd Certificate

No cake to be made from packet mixture

Pre-school

- 17 Plate of six decorated plain biscuits

Five to Ten years

- 18 Six plain patty cakes (not iced not exhibited in papers)
- 19 Six pikelets

Eleven to Sixteen Years

- 20 Six plain scones
- 21 Six Decorated cup cakes (not exhibited in papers)
- 22 Novelty cake - decorated theme

Junior Champion

Most successful exhibitor overall – Proudly sponsored by the McWhirter Family



Hairdressing

6842 1926

Mary Milsom 11 Timor Street Coonabarabran

Section I & J - NEEDLEWORK & CRAFT

Stewards: Glennis McDougall

Entry Fee: \$2.00

- Entries to be handed to the steward at main pavilion between 10am & 12pm Friday 23rd
- Exhibits must be the work of the exhibitor and not previously exhibited at Binnaway.
- No items are to be removed before 3pm on Saturday.
- All classes to be judged as per schedule.

PRIZES: 1st \$5 + Certificate; 2nd Certificate; 3rd Certificate

- 1 Machine made garment or article
- 2 Hand embroidered garment or article
- 3 Decorated coat hanger
- 4 Crochet rug using commercially spun wool or yarn
- 5 Crochet babywear using commercially spun wool or yarn
- 6 Crochet shawl using commercially spun wool or yarn
- 7 Any other crochet article or garment not mentioned above (commercially spun wool or yarn)
- 8 Knitted rug using commercially spun wool or yarn
- 9 Knitted babywear using commercially spun wool or yarn
- 10 Knitted shawl using commercially spun wool or yarn
- 11 Any other knitted article or garment not mentioned above using spun wool or yarn
- 12 Article made from home spun wool or yarn
- 13 Article made by person over 85
- 14 Decorated cushion
- 15 Patchwork quilt – professionally quilted
- 16 Patchwork quilt- machine or hand quilted by maker
- 17 Any other article of patchwork
- 18 Article of applique-machine or hand appliqued
- 19 Best dressed doll or teddy
- 20 Piece of beaded jewellery
- 21 Article of scrapbooking on cardboard
- 22 Any article not mentioned above

Champion piece of work classes 1 – 22 Ribbon

Most Successful classes 1 -22 Ribbon plus Cash Prize

\$10

Section K - ARTS & CRAFT

Steward: Lyn Petherbridge

Entry Fee: \$1.00

- All entries to be handed in to steward at main pavilion between 10am-12pm Thursday, 22 February.
- Please note late entries will not be judged, just displayed if space permits.

PRIZES: 1st \$2 and certificate. Highly Commended certificate will be awarded

Please NO names on the front of work. NAME and SECTION is to be written on back of entry.

Preschool and Play Group Section

- 1 Painting - Any subject
- 2 Drawing – Any subject
- 3 Painting or Drawing – Mixed media
- 4 Collage – Any subject
- 5 Craftwork – Handiwork, Model, Sculpture

Infants Section

- 6 Painting – Any subject
- 7 Drawing – Any subject
- 8 Painting or Drawing – Mixed media
- 9 Collage – Any subject
- 10 Craftwork – Handiwork, Model, Sculpture
- 11 Computer Graphics

Primary Section

- 12 Painting – Any subject
- 13 Drawing – Any subject
- 14 Painting or Drawing – Mixed media
- 15 Collage – Any subject
- 16 Craftwork – Handiwork, Model, Sculpture
- 17 Computer Graphics

Secondary Section

- 18 Painting – Any subject
- 19 Drawing – Any subject
- 20 Painting or Drawing – Mixed media
- 21 Collage – Any subject
- 22 Craftwork – Handiwork, Model, Sculpture
- 23 Computer Graphics

Proudly Sponsored by Binnaway Pre School

Daryl Gray Transport

Livestock

New 8.5m (28") 2x1 Stock Crate

- Sheep - 2 Decks***
- Cattle - Non-Bruise, 3 Pens***

I can move your stock locally or state wide

- To and from Saleyards***
- To Processors***
- Auctions Plus***
- Around your property***

Call Daryl for a friendly, obligation free quote.

General Freight

8.5m (28") Tray, 14 tonnes Payload

***Competitive rates for moving hay, bulk bags,
and other farm produce or farm inputs.***

Call Daryl for a friendly, obligation free quote.

Binnaway

Owner Operator

daryl@jdgray.id.au

0436 412 197



Jim Lyons Agency



0428 668 635



Rural Property Specialists
Premium Properties for Profitable Livestock Operations

Contact Info



Jim Lyons Agency



Email: j_lyons@bigpond.com



Phone: 0428 668 635



Address: 302 Whitehouse Lane, Tamworth NSW 2340

Section L - PHOTOGRAPHY

Steward: Lisa McDonald

Entry Fee: Senior \$2.00 - Junior (16 years or under) \$1.00

Prizes: 1st \$5 and Certificate; 2nd Certificate; 3rd Certificate (Open only)
Juniors: 1st \$3 + Certificate, 2nd Certificate, 3rd Certificate

- All entries must be mounted on card and must have been taken by the exhibitor but may be trade processed.
- All entries must be handed to the steward by 12pm Monday, 19th February 2024
- Exhibits may be left at Larry Tolmie Agency office, with entry form and entry fee
- All photographs are to be mounted, maximum size of mounting A4 on light cardboard

Black & White

- 1 Open (any subject not listed below)
- 2 Action
- 3 Portrait
- 4 Travel
- 5 Macro (Extreme Close-up)
- 6 Animal or Insect Study
- 7 Landscape or Seascape
- 8 Pets
- 9 Local Scene

Colour

- 10 Open (any subject not listed below)
- 11 Action
- 12 Portrait
- 13 Travel
- 14 Macro (Extreme Close-up)
- 15 Animal or Insect Study
- 16 Landscape or Seascape
- 17 Pets
- 18 Sunrise or Sunset
- 19 Flower study
- 20 Local Scene

School Children (Juniors)

- 21 Colour – any subject
- 22 Colour – Animal or Pets
- 23 Colour – Sunrise or Sunset
- 24 Colour- Macro (Extreme Close-up)
- 25 Flower study
- 26 Manipulated or Experimental
- 27 Black & White- Any subject

Champion Print Junior classes - \$25 Champion Print Senior - \$50
Most successful exhibitor classes 1-20 Donated by Toni Conquest
in memory of Pat Kroehnert

Section M - POULTRY

Chief Steward: Angus Barlow

Entry Fee: \$2.00 per bird. Cheques payable to Binnaway Show Society

Email entries to binnaway.show@gmail.com Waiver forms can be downloaded from www.binnawayshowground.com

EXHIBITING CONDITIONS

- Entries close Monday 19th February, 2024 or when pens are full.
- Late entries will NOT be accepted.
- Entry forms can be obtained by request by email, post from Show Secretary.
- Entries to Secretary Pam Southwell P.O. Box 57 Binnaway 2395.
- Cheques to be made payable to Binnaway Show Society.
- Birds are to be penned ready for judging by 9am on Saturday 24th February 2024.
- All entries must be the property of the exhibitor and free of vermin and disease, otherwise they will be removed from the pavilion as a courtesy to other exhibitors.
- No birds are to be removed from the pens or handled without permission from the Chief Steward, and birds are NOT to leave the pavilion before 3pm.
- All care taken, but the Society will not be held responsible for any loss or damage that may occur.
- All junior exhibitors are required to pen their own birds and be present for judging
- All leg bands must be removed when penned.
- The Judges decision will be final.

PRIZES: First \$5 ribbon, 2nd ribbon, 3rd ribbon

Major sponsors - Ballimore Auctions

Champion \$5.00 Reserve Champion Ribbon

Junior Champion \$5.00 Junior Reserve Champion Ribbon

Overall Champion Bird of Show \$50 - Sponsored Pam Southwell and Ballimore Auctions

N2 Softfeather Standard

Male	Female
1 Australorp	2 Australorp
3 Langshan (AC)	4 Langshan (AC)
5 Orpington (AC)	6 Orpington (AC)
7 Wyandotte(AC)	8 Wyandotte(AC)
9 Rhode Island (AC)	10 Rhode Island
11 Sussex(AC)	12 Sussex(AC)
13 Leghorn(AC)	14 Leghorn(AC)
15 Silkie(AC)	16 Silkie(AC)
17 AOV Soft Feather (State Variety)	18 AOV Soft Feather (State Variety)

Champion Softfeather Standard **Reserve Champion Softfeather Standard**

M3 Hard Feather Standard

Male	Female
19 OEG Black Red	20 OEG Partridge, Wheaten or Clay
21 OEG PILE	22 OEG PILE
23 OEG Duckwing	24 OEG Duckwing
25 OEG Blue Red	26 OEG Blue Red

- 27 OEG (AOC)
- 29 Pit Game (AC)
- 31 Australian Game (AC)
- 33 Indian Game (AC)
- 35 AOV Hardfeather Standard

Champion Hardfeather Standard

M4 Softfeather Bantam

Male

- 37 Pekin (AC)
- 39 Australorp (AC)
- 41 Langshan Black
- 43 Wyandotte (AC)
- 45 Rhode Island (AC)
- 47 Leghorn(AC)
- 49 Japanese
- 51 Belgian (AOV)
- 53 AOV Softfeather

Champion Softfeather Light Bantam

M5 Hardfeather Bantam

Male

- 55 OEG Black Red Light Leg
- 57 OEG Black Red/Partridge Dark Leg
- 59 OEG Duckwing
- 61 OEG Spangle
- 63 OEG (AOC)
- 65 Pit Game(AC)
- 67 Modern Game Black Red
- 69 Modern Game Pile
- 71 Modern Game (AOC)
- 73 Australian Game (AC)
- 75 Indian Game(AC)
- 77 AOV Hardfeather Bantam

Champion Hardfeather Bantam

M6 Waterfowl

Drakes

- 79 Muscovy(AC)
- 81 AOC (State Variety)

Champion Waterfowl

M7 Miscellaneous

Male

- 83 Guinea Fowl (AC)

M8 Junior Section

Male

- 85 (AV) Large
- 87 (AV) Bantam

- 90 Proudest Rooster

Champion Junior Exhibit

- 28 OEG (AOC)
 - 30 Pit Game (AC)
 - 32 Australian Game (AC)
 - 34 Indian Game (AC)
 - 36 AOV Hardfeather Standard
- Reserve Champion Hardfeather Standard**

Female

- 38 Pekin (AC)
- 40 Australorp (AC)
- 42 Langshan Black
- 44 Wyandotte (AC)
- 46 Rhode Island (AC)
- 48 Leghorn(AC)
- 50 Japanese
- 52 Belgian (AOV)
- 54 AOV Softfeather

Reserve Champion Softfeather Light Bantam

Female

- 56 OEGWheaten,Partridge or Clay Light Leg X
- 58 OEG Black Red/Partridge Dark Leg
- 60 OEG Duckwing
- 62 OEG Spangle
- 64 OEG (AOC)
- 66 Pit Game (AC)
- 68 Modern Game Black Red
- 70 Modern Game Pile
- 72 Modern Game (AOC)
- 74 Australian Game (AC)
- 76 Indian Game(AC)
- 78 AOV Hardfeather Bantam

Reserve Champion Hardfeather Bantam

Ducks

- 80 Muscovy(AC)
 - 82 AOC (State Variety)
- Reserve Champion Water Fowl**

Female

- 84 Guinea Fowl (AC)

Female

- 86 (AV) Large
- 88 (AV) Bantam
- 89 Happiest Hen

Reserve Champion Junior Exhibit



EM & M PHOTOGRAPHY



Capturing memories one click at a time

Available for all your photography needs

CONTACT US

0447932231



Emandmphotography





Munnabah

Santa Gertrudis

Stud No: 1437

LP

Selling at our annual

**GLENALBYN-MUNNABAH BULL
SALE**

“Glenalbyn”- 243 Twelve Mile Rd. Wellington NSW

Tom Dunlop: 0408264302



BAKED FRESH DAILY

P. 02 6842 1002

67 John St, Coonabarabran

*Delivered fresh daily to
Andrews Store, Binnaway*



CHRISTIE AND HOOD

Narromine

Dubbo

Gilgandra

6884 3800

Licensed Livestock & Rural Property Agents & Auctioneers

Offering a comprehensive range of
options for marketing your livestock.

- ◆ Professional drafting, sale & prompt payment on all sales.
- ◆ Prime Lamb & Sheep sales every Monday & Prime Cattle sales every Thursday at Dubbo saleyards.
- ◆ Regular Store Cattle Sales in Dubbo.
- ◆ Online livestock sales
- ◆ Paddock sales to Lot Feeders & Re-stockers through our large client network.
- ◆ Over the Hook & Direct to Works Lamb and Cattle Sales.
- ◆ Rural Property and Clearing Sales.

“We’re working for your future”

After Hours Phone Numbers:

Paul Alchin

0429 472 741

Tim Wiggins

0429 843 804

Don Foran

0428 470 308



Clarke and Cunningham

Your local Solicitors

Pam McCaffrey, Principal

Brian Mockler, Consultant

Office: 12a John Street
Coonabarabran NSW

Ph: 6842 1455

admin@clarkeandcunningham.com.au



Australian **PREMIER** genetics

All Your Breeding Needs!

Artificial Insemination

Ultrasound Preg Testing

Semen Testing & Collection

Embryo Transfer

Semen & Embryo Storage

Breeding Supplies & Merch

Freeze Branding

Contracting Services include

Livestock Cartage

Calf Marking

Mustering

General Stockwork



Contact: Caitlin 0419 238 216

Brendan 0407 890 944

RIVER
Road

TRANSPORT
COONABARABRAN

Low Loader & Livestock Transport

- ❖ Widens to 3.6m to suit Headers ~ 20,000lb
- ❖ winch Legal carrying capacity 30tonne
- ❖ 45ft single deck - non bruise cattle float
- ❖ Two Deck - non bruise cattle crate

Michael and Michelle McEvoy

Coonabarabran

6842 3039

0429 151 743

Email: rivroad@bigpond.net.au

Barlow & Peadon Schute Bell



- **Prompt Settlement**
- **Livestock will be handled with the upmost care**
- **Provision of small acreage with ample feed, shade and water for short term spelling**

Consider us for your next consignment

Angus Barlow: 0418 638 052
Andrew Peadon: 0417 278 349

Office: (02) **6885 0701** Fax: (02) 6885 4622

PO Box 469, Dubbo NSW 2830

Email: office@barlowpeadon.com.au

Web: www.barlowpeadon.com.au

rma network.

Accredited Member



BINNAWAY PHARMACY

Phone: (02) 6844 1378

Fax: (02) 6867 9897

Email: binnawaypharmacy1@gmail.com

Trading Hours

Monday to Thursday: 9am to 5pm

Friday: 9am to 1:45pm

SERVICES

- Blood Pressure Monitoring
- Blood Glucose Monitoring
- Medication Checks
- Webster Packing
- Proud Supplier of NDSS
- Return of Unwanted Medications
- Scripts on file Service
- Vitamins and Supplements
- Cosmetics
- Giftware
- Mobility Aids
- Toiletries
- eScripts
- VACCINATIONS
 - Flu Vaccinations
 - COVID Vaccinations

“Extending An Olive Branch”

GRAPHIC DESIGN

UNIFORMS

EMBROIDERY

PRINTING

TROPHIES



www.xlr8promotions.com.au

for all your promotional products and apparel

Call Nick and Angela on 0417 218 064



Disability Services, Training and Skills Development.



Community Participation. Transition To Work. Life Choices. Community Service Packages. NDIS Services.

Breaking thru Barriers
Creating Futures.

35 Cowper Street Coonabarabran NSW 2357
www.breakthru.org.au Ph: 6842 1030 Fax: 6842 5260

I am able



Ballimore Auction Small Birds & Poultry



Third Sunday of every month
Commencing at 9am
30km east of Dubbo on Dunedoo Road

1800-303-699

www.ballimoreauction.com

CRAIG SCHIEMER



TRANSPORT

28ft Tabletop Truck and a 20ft Trailer
Stock, Hay & General Freight

-Hassle free - no jobs a worry-

Mobile: 0428 771128



Binnaway

Binnaway Progress Association

10 Renshaw Street

Binnaway NSW 2395

P. 02 6842 3200

E. coonabarabran@joblinkplus.com.au

Coonabarabran

Shop 7, 90 John Street

Coonabarabran NSW 2357

P. 02 5881 6700

F. 02 6842 3266

E. coonabarabran@joblinkplus.com.au



Real Wild Flowers
Cutflowers

A wide range of Australian Native cutflowers including Banksias, Mallee Eucalypts, Foliage Kangaroo Paws, Hakeas...



Native Plants

A wide selection of garden, farm and Bush Tucker plants suitable for hot summers and cold winters.
Bring nature into your garden!



Open Day

Last Saturday of September
& Last Saturday of October



Bilby Blooms

0448 841 044 (Nursery)

0429 441 044 (Flowers)

ART IN THE PAVILION

Art Convener: Michelle Rapley Mobile: 0413 000 417

Entry Fee: \$5.00

- All hanging works **MUST** meet the following criteria **or they will NOT be displayed:**
 - **READY TO HANG** securely with two D rings attached to the back of the frame (minimum 5cm from the top) and hanging wire firmly between the D rings.
- **NEW – SIZE LIMIT** – due to space restrictions hanging artworks should be less than 1.2m² or equivalent.
- Entries must be labelled with name, phone number, title, sale price or NFS, and category on the back.
- Entries delivered to the pavilion between 8.30am – 1pm on Thursday 22nd February 2024.
- Early entries may be dropped into Larry Tolmie office Wednesday 21st February 9.30am - 3.30pm
- Artworks or leather pieces may be posted to PO Box 57, Binnaway, 2395, and must be received by Wednesday 21st February.
- Entries cannot be more than twelve months old, and not shown previously at a Binnaway Show.
- Junior section is open to entrants up to 18 years old.
- A minimum of 5 entries per class to receive full prize money awarded.
- Second prize will be awarded where there are 5 or more entries in that class.
- The committee reserves the right to change sections specified if insufficient entries are received in designated classes or deemed to be entered into the incorrect section.
- Judging will take place on Friday morning.
- All care is taken but no responsibility taken for loss or damage.
- A commission of 20% will be paid to the show association where sales are made.
- Entries, prize money and purchased artworks are to be collected between 3.30 – 4pm on Saturday 24th February.

CATEGORY:

1) Oil/Acrylic	Any Subject
2) Watercolour	Any Subject
3) Drawing Pencil, Pen, Charcoal	Any Subject
4) Pastel	Any subject
5) Mixed Media	Any subject
6) Sculpture	(Wood, glass, metal/combination)
7) Leatherwork	Any item made from leather
8) Junior	Any subject/any medium
9) Novice	Any subject/any medium

Prizes:

1st Prize	\$150 each category
2nd Prize	\$50 each category
People's Choice decided by the Public	\$50 Cash Prize

Binnaway Show Society Champion Art Exhibit \$200.00

GOOREE PARK Wine



Book a tasting and enlighten your palette with over 19 different varieties of wine, from grapes grown in our vineyards. Enjoy a personalised tasting and a cheese platter as you savour our award winning wines.

Our Location...

Gooree Park Cellar Door



1544 Castlereagh HWY
Galambine NSW 2850

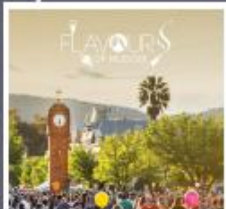
What's coming up in 2024...



Greats Gooree Roasts

EARLY SEPTEMBER

- SMOKED MEATS
- GOOREE WAGYU & LAMB
- LIVE ENTERTAINMENT



Flavours of Mudgee

28TH SEPTEMBER

- LOCAL FOOD & WINE PRODUCERS
- TASTING PACKAGES
- LIVE ENTERTAINMENT



Derby Day

2ND NOVEMBER

- BIG SCREEN LIVE RACING
- ALL DAY GRAZING & BEVERAGE PACKAGE
- LIVE ENTERTAINMENT



Melbourne Cup

5TH NOVEMBER

- BIG SCREEN LIVE RACING
- THREE COURSE SIT DOWN LUNCH & BEVERAGE PACKAGE
- LIVE ENTERTAINMENT



Experience...



Private Stud Tours, a must for all horse lovers & enthusiasts. Available daily.

CELLARDOOR@GOOREEPARK.COM.AU | 02 6378 1800 | WWW.GOOREEPARK.COM

SUPER MAN

Contract Fertiliser Spreading

Super - Lime - Gypsum - Urea
& Manures

4 x 4 Truck Mounted
Spreader

also Contract Fencing

ROB ADAMS

6844 1678

0427 441 678

154 Ropers Rd, Binnaway NSW



- ELECTRICAL
- AIR CONDITIONING
- REFRIGERATION
- Grid Connect & Standalone
Solar Install & Upgrades
- Tesla Batteries

Finance available on Solar & Batteries

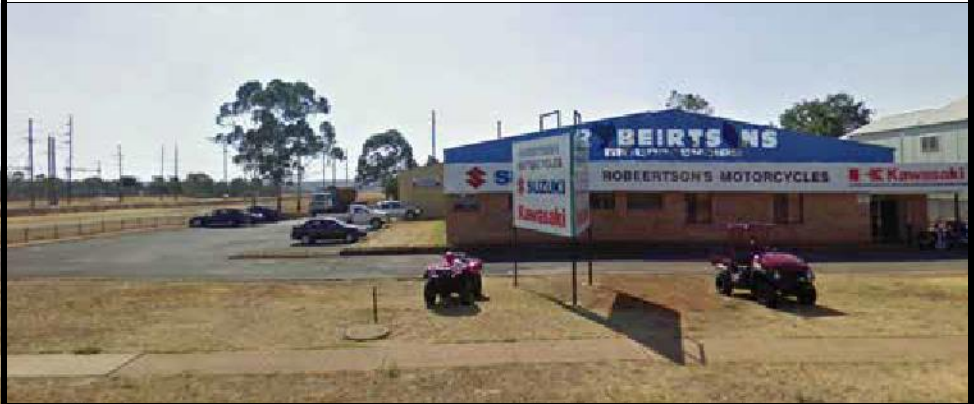
Ph: 0427 689 153



Lic. No. 96140C

Guy Andrews Electrical

Robertson's Motorcycles



Robertson's Motorcycles Dubbo agents for Suzuki, Kawasaki, Husqvarna and Can-Am Motorcycles and ATV's and Side x Sides as well as Kioti Tractors and Husqvarna Mowers and chainsaws

Full workshop facilities and huge accessories department

Easy in-house finance available
Robertson's Motorcycles, Wheelers Lane Dubbo

PH: 02 6884 2933

Mob: 0400 204 384



Fax: (02) 68826901

Web: www.robmc.com.au

75 Wheelers Lane

Dubbo NSW 2830



Historic
BINNAWAY RAILWAY BARRACKS

George St Binnaway



Budget Accommodation

\$60 per person per night Single

\$100 per night twin share

\$20 children under 13 years

Comfortable beds and air Conditioned rooms

Self Contained Flat sleeps 4

\$120 per night for 2

\$20 per head extra guests

Light Breakfast included

Shared separate male and female bathrooms

Shared communal areas

Free Electric BBQ for guests

Enquiries and Bookings:

Phone 0400477355

Email: binnawaybarracksaccommodation@gmail.com



**COUNTRY STYLE
SIMMENTALS**

PRODUCING QUALITY TRADITIONAL & BLACK SIMMENTAL

Adam Sciberras
160L DONNELLY RD
EUMUNGERIE
NSW 2822
Ph: 0403 024 809 - 02 6888 1112

Offering bulls and heifers all year round



We're on the move!

Rod Pilon Transport Pty Ltd
31L Narromine Road Dubbo
NSW 2830

Your solution

- Transport
- Storage
- Distribution



DUBBO – SYDNEY – MELBOURNE – MOREE – BRISBANE – MOUNT ISA

ENQUIRIES@PILONS.AU

1800 PILONS

BINNAWAY



RURAL SUPPLIES

For all your rural needs:

| Stockfeed | Fencing | Water Supplies | Steel
Pumps | Solar Pumps | Chemical | Seed |
Fertiliser | Animal Health

22 Renshaw Street, Binnaway

Phone: 02 6844 1711

Email: binnaway@binnawayrural.com.au

HELPING KEEP AUSTRALIA MOVING



Through fires, floods, droughts and pandemics, ARTC is here to help keep Australia moving.

It's why we work so closely with local communities like Binnaway, which plays such a crucial part in our Hunter Valley rail network – a network that employs more than 500 locals who operate and maintain the rail network.

By growing freight on rail and better connecting our regions, ARTC is striving to make a genuine difference in small towns across the country. We are proud to have been a member of the Binnaway community for over 100 years.

Proudly supporting
 Lifeline

If you, or someone you know needs crisis support please call 13 11 14, available 24/7

ARTC
artc.com.au